

# Louisiana Special School District

---



Welcome

# Louisiana Special School District

---



## Superintendent's Board Report

David Martin, Ed.D.

February 7, 2024

# Report Agenda

- Program Updates
- Climate and Culture Survey Discussion
- General District Updates



# Louisiana Special School District

---



## Louisiana School for the Deaf

February 2024



## Announcements & Highlights:

- Building more of our family and community connections
  - Mural unveiling
  - Family/School Org
  - Outreach Open House
- Language Policy - Staff & Students Trained
  - Family training in planning stages
- 20 new hires so far this year
- Planning for next year's vacancies



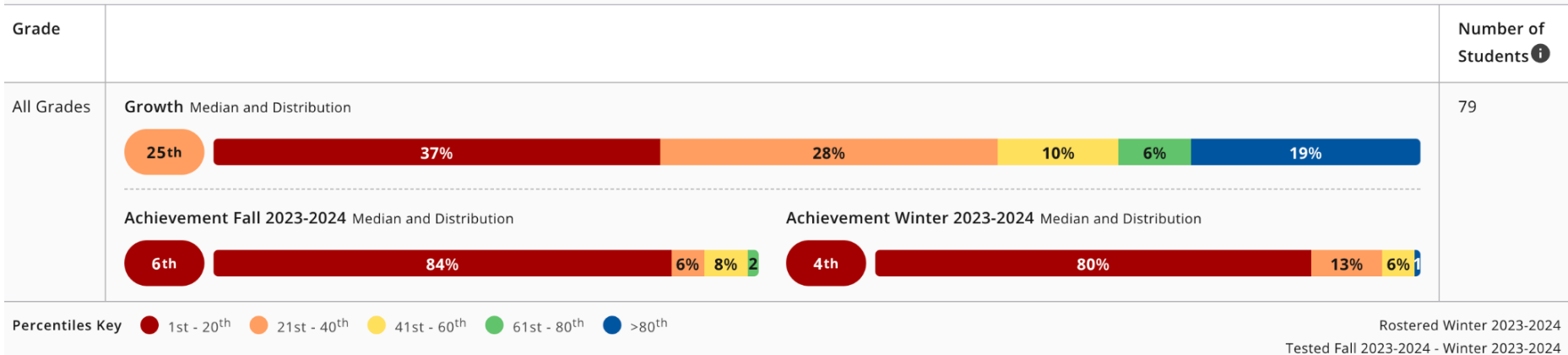
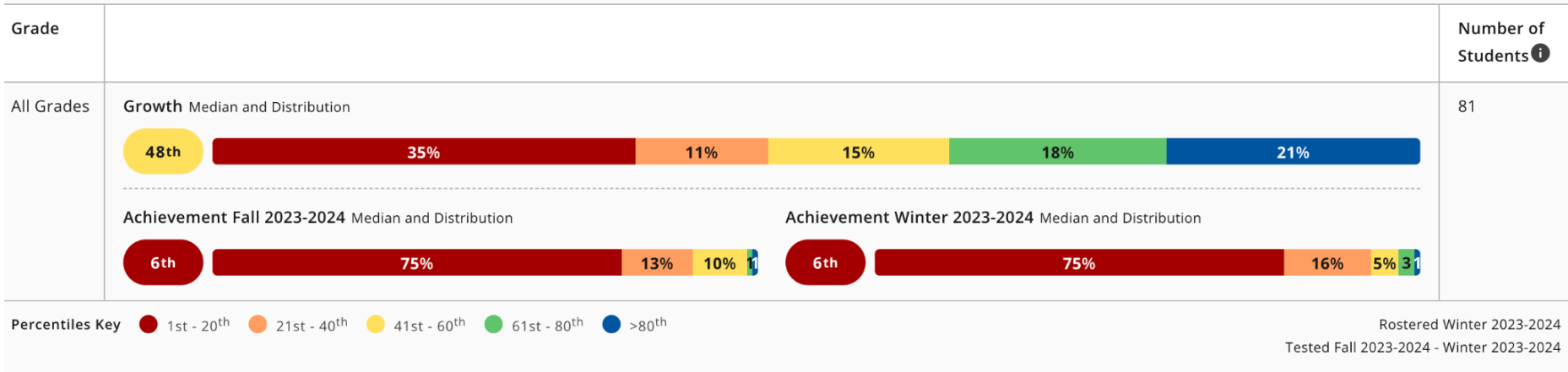
**February 24**  
**Greater New Orleans**  
Find us in the meeting room at the River Ridge library, 1:30-3:30 PM!

**April 13**  
**Central LA**  
Join us for Deaf History Month! Meet us at Westside Regional Library in Alexandria, from 1-3 PM.

## Upcoming Events:

- **Outreach Regional Events**, various
- Academic Bowl, February 23-26
- **Mural Unveiling**, March 1st (awaiting confirmation)
- **PPEP Monthly Playgroups**, various locations throughout LA, March
- **Deaf History Month Visit**, April 12th
- **Outreach Open House**, May 2024





# Data & Interventions Updates

Intervention Block

Bilingual Grammar Curriculum (Oct 27)

Bedrock Literacy (Oct 27)

Edulastic

Eagle 2.0 (TBD)

UFLI (Jan 2024)

Instructional Coaching & Supports

Tutoring After School

Zearn

IXL

ASL Immersion

Focus on CR

Tier 1 Curriculum



# Louisiana School for the Visually Impaired

**Goal: LSVI will increase Math and ELA scores by 5% on the LEAP 2025 tests.**

## **Fall LEAP 2025 High School**

- Biology- 40% Mastery or Above (5 students)
- ELA I- 67% Mastery or Above (3 students)

## **DIBELS (grade-level)**

- Noticing that large print students are reading significantly faster than braille students (even braille students reading on level).

## **IRLA Reading Intervention K-8**

- BOY 20% of students were reading on grade-level.
- MOY 30% of students are reading at grade level.
- Number of **Emergency** (2 grade-levels below or more) has decreased; while the **At Risk** (1 grade level below) and the At or Above grade-level both have increased.

## **Math Intervention K-8**

- Math interventions are working. Focusing on the standards that will have the biggest impact on math education for LSVI students.





# Literacy Intervention Data K-8

## September 15, 2023

- Emergency-13 students (52%)
- At risk- 7 students (28%)
- Above grade-level- 5 students (20%)

## December 21, 2023

- Emergency- 9 students (35%)
- At risk- 10 students (39%)
- Above grade-level- 8 students (30%)



Student Exclusion Levels [Show Excluded Rows \(0\)](#)

Visibility	Grade	Date	Students	N/A	RTM	1Y	2Y	3Y	1G	2G	1B	2B	1R	2R	Wt	Bk	Ov	Pu	1Br	2Br	Sl	Gl	Emergency	At-Risk	Proficient or Above		
👁️	K	Sep 15, 2023 / 2024	1					1																	1	100.0%	
👁️	K	Dec 21, 2023 / 2024	1						1																	1	100.0%
👁️	1st	Sep 15, 2023 / 2024	5			3	1	1	3														5		0	100.0%	
👁️	1st	Dec 21, 2023 / 2024	5			3	1	1	2	1													4	1	0	80.0%	
👁️	2nd	Sep 15, 2023 / 2024	1									1													1	100.0%	
👁️	2nd	Dec 21, 2023 / 2024	1										1												1	100.0%	
👁️	4th	Sep 15, 2023 / 2024	4						1														1	2	1	25.0%	
👁️	4th	Dec 21, 2023 / 2024	4						1														1	2	1	25.0%	
👁️	5th	Sep 15, 2023 / 2024	1																						1	100.0%	
👁️	5th	Dec 21, 2023 / 2024	1																						1	100.0%	
👁️	6th	Sep 15, 2023 / 2024	5										1	2									3		2	60.0%	
👁️	6th	Dec 21, 2023 / 2024	5										1	1	1								2	1	2	40.0%	
👁️	7th	Sep 15, 2023 / 2024	6										1	1									3	2	1	50.0%	
👁️	7th	Dec 21, 2023 / 2024	6										1	1									2	3	1	33.3%	
👁️	8th	Sep 15, 2023 / 2024	2																				1	1		50.0%	
👁️	8th	Dec 21, 2023 / 2024	3																				2	1	1	66.7%	
	<b>Total</b>	Sep 15, 2023 / 2024	25			3	1	2	4		1	1	2	1	4	2	2	4					13	7	5	52.0%	
	<b>Total</b>	Dec 21, 2023 / 2024	26			3	1	1	3	2	1		2	2	3	2	1	4	2	1			9	10	7	34.6%	



<b>4<sup>th</sup> grade</b> BOY: 41% MOY: 63% ↑ 22%	<b>Level</b>	<b>Highest Performance Standard(s)</b>	<b>Lowest Performance Standard(s)</b>
<b>5<sup>th</sup> grade</b> BOY: 23% MOY: 27% ↑ 4%	<b>Elementary</b>	-NBT (Numbers and Operations in Base Ten)	-NF (Number and Operations-Fractions)
<b>6<sup>th</sup> grade</b> BOY: 28% MOY: 41% ↑ 13%		<b>Middle School</b>	-Expressions and Equations (6. A1,B3, B6)
<b>7<sup>th</sup> grade</b> BOY: 36% MOY: 46% ↑ 10%	-Geometry (6. A3, 7.A2)		-Ratios and Proportional Relationships (6.A 2,3)
<b>8<sup>th</sup> grade</b> BOY: 34% MOY: 54% ↑ 10%			

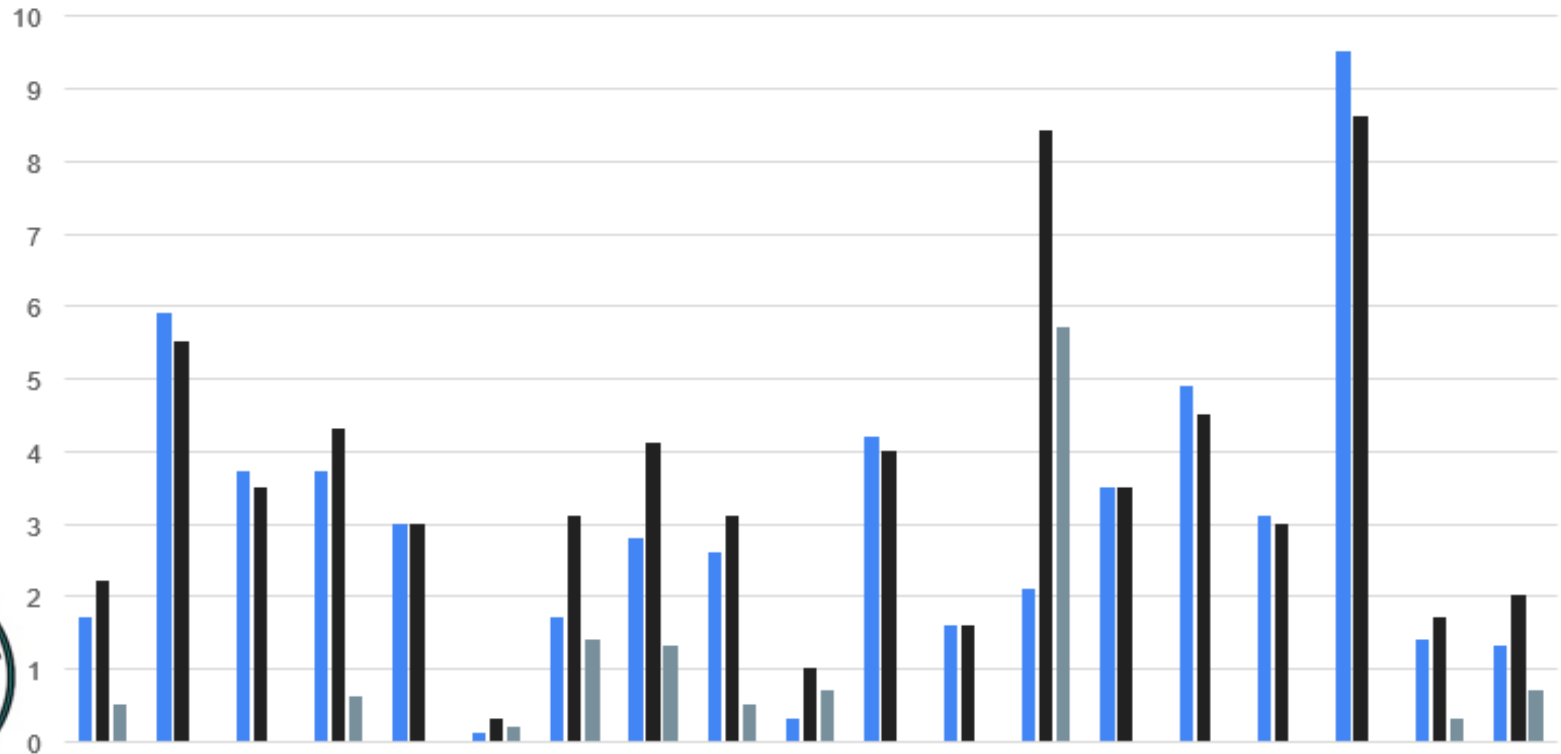
# Special School Programs: 23-24 Reading and Math Data

- Program: Pinecrest Support and Services Center
- Assessment: Renaissance Star Reading  
Renaissance Star Math
- Assessment Intervals: Quarterly
- Purpose: Growth and Informing Instruction

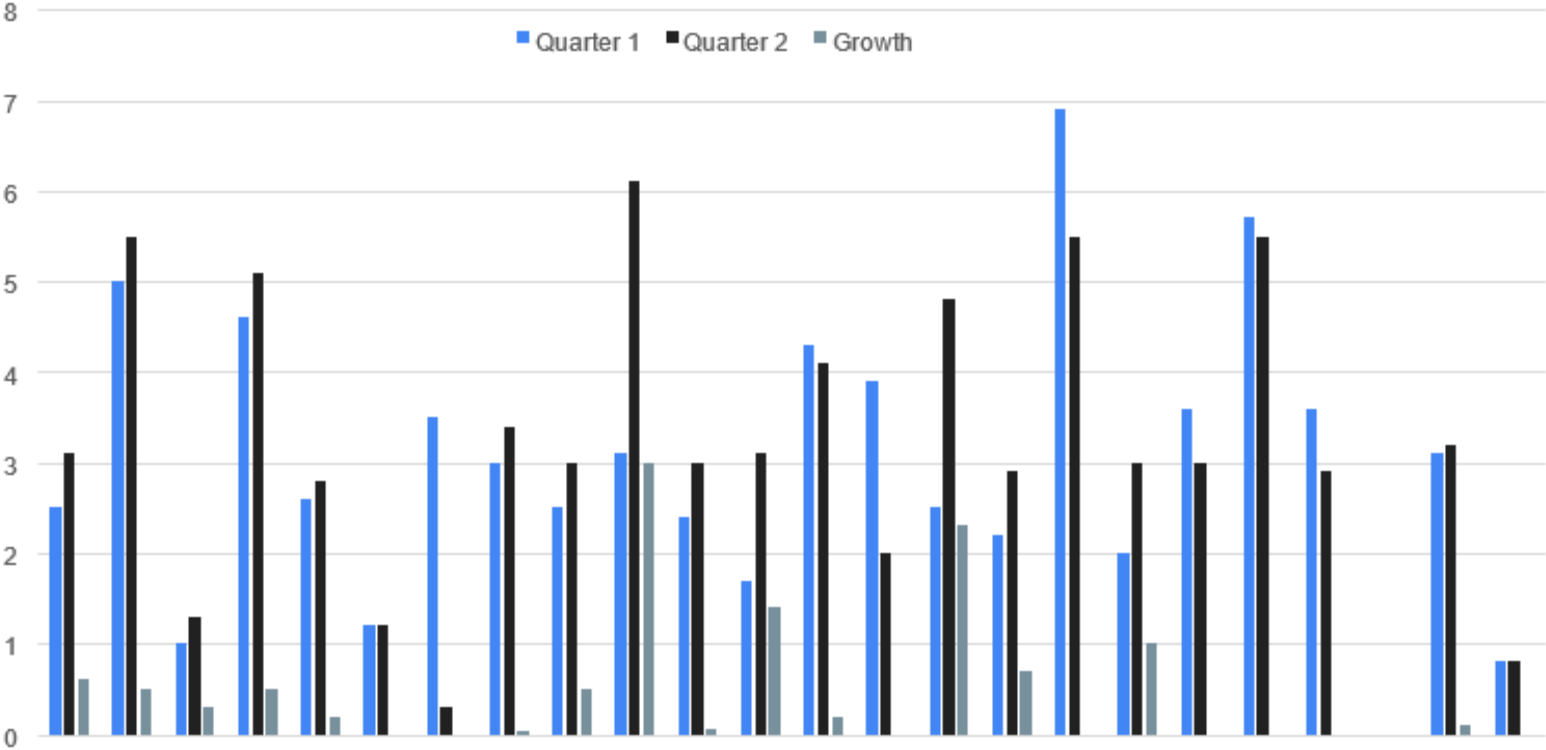


# Star Reading

■ Quarter 1 ■ Quarter 2 ■ Growth



# Star Math



# District Wide Supports Update

- Director of Federal Programs and Director of CTE have been selected
- Reviewing our processes to ensure we are operating efficiently and how we can better support the schools and SSP
- Monitoring data, deadlines, and grant expenditures to stay compliant with all LDOE, state, and federal requirements



# District Wide Supports Update

- Assessment Calendar opens mid-February with ACT and LEAP Connect
  - LEAP2025 Grades 3-8 testing window is April 15 – May 17
- Admissions is continuing to see a steady stream of new applicants
- Summer Learning Program (LSD & LSVI) is scheduled for June 3<sup>rd</sup> - 28<sup>th</sup>
  - Four weeks, Monday-Friday
  - Academics, remediation, expanded-core curriculum, ASL and fun!
  - The schools will share more information about their summer programs with families and community members very soon



# CTE Update

## Aquaponics Lab

- Water is running and will soon be ready for fish

## Barn Project

- Working on approvals and other logistics required for state projects
- Should break ground on the barn by March & be complete by June
- Equipment has been ordered and is starting to arrive

## February is *National CTE Month*

- Shout-out to our current CTE teachers and students
- Working to increase awareness of our top-notch facility and programs





# Louisiana Special School District

---



## Non-Academic Student Services

Kathleen L. Carr  
Office: 225-757-3320  
kcarr@lsdvi.org

# Mission, Departments and Process

- Non-Academic Shared services will support Special School District's Instructional/Educational Services Programs by providing the specialized services necessary to educate children/young adults who have sensory challenges to become self-sufficient adults in the mainstream of society.
- In addition, Non-Academic Services Programs provide training to these children/young adults through guidance in and demonstration of appropriate behaviors to obtain independent living skills.
- Shared procedures, shared documents, and communication processes continue to expedite Student Services' responses to Special School District's professional team, scholars, families, and community partners.
- Non-Academic Services Departments include:
  - School-based Medicaid Services
    - Nursing, Speech, Occupational, and Physical therapy as well as audiological services
  - Residential Services
  - Nutrition Services
  - Louisiana Instructional Materials Center - AEM
  - Educational Technology

# Non-Academic Student Services – Semester 1 SY 23-24

## Student Health and Wellness Services/School-based Medicaid Services

- **Nursing Services**
  - Total Medication Administrations – 10,962
  - Total Nursing Consults – 14, 075
- **Speech/Language Therapy Services** – 67 students served at LSDVI
- **Occupational Therapy** – 24 students served at LSDVI; 9 students served at Pinecrest
- **Physical Therapy Services** – 11 students served at LSDVI
- **Audiological Services** – 93 students served at LSDVI

## Residential Services

- 57 students enrolled in LSD and LSVI's educational services participate in residential life.
- Shared activities have included Trick or Treat, Friendsgiving, Holiday parties including gift-giving events, Holiday Lighting Festival, and Bingo.
- Students' progression in life skills domains are measured via observational scales addressing LaPAS performance indicators.



# Non-Academic Student Services – Semester 1 SY 23-24

## **Nutrition Services**

- Meals served, meeting USDA guidelines, during Q1 **totaled 10,967** as evidenced by report to LaPAS

## **Louisiana Instructional Materials Center – AEM (LIMC-AEM)**

- Two program goals: 1) to ensure assistive technology and accessible educational materials to students and 2) to provide professional development to school systems to build capacity for educators in providing assistive technology services to students.
- LIMC-AEM has successfully met deliverables as evidenced by Q1 and Q2 reports to LDOE.

## **Educational Technology Services**

- Implementation of mobile device (iPads) management system to monitor and track devices and applications throughout the district.
- Implement change of website provider and oversee content migration with new vendor, Appetegy.



# Climate and Culture Survey Results-Strengths

- Strong return rate-190 respondents
- Top two strengths
  - Enjoy working with co-workers-3.6
  - Co-workers support each other and are helpful-3.5



# Climate and Culture Survey Results-Growth Areas

- Three areas at a 2.9
  - Feel valued for their contribution to the SSD
  - Feel SSD policies are administered fairly
  - SSD maximizes resources for a positive impact on student outcomes
- Leadership advocates for its employees-3.1



# Climate and Culture Survey Results-Supt. Specific

- Two top areas
  - Feels the superintendent is approachable 3.5
  - Feels the superintendent regularly communicates with staff 3.6
- Over the last six months, the superintendent has been making changes that have positively impacted the SSD  
3.3



# Climate and Culture Survey Response

- Each arm will have its own Climate and Culture Committee
  - LSD and LSVI are in place
  - SSP and District Office will work to have in place by end of February
  - Representatives from each committee will form a working group to formalize a SSD Climate and Culture plan





# General District Updates

- The Legislative season is upon us which means we will have some upcoming budget meetings in the House and Senate
- Continuing to monitor the budget and prioritizing needs
- Two new appointments with the district leadership team
  - Scott Whitford, General Counsel
  - Jeff Jacobs, Executive Director of Operations
  - Crystal Bobb, Internal Auditor



# General District Updates cont.

- Midyear testing has wrapped up and teams are reviewing the data to make instructional decisions
- Gearing up for LEAP testing
- Working on district calendar and school schedules for next year
- Farm to Table Program progressing and on track for launch in August

