

Louisiana Special School District



SSD Board Meeting
August 9, 2021

Teacher Salary/Supplemental Pay

- A \$1,500 supplemental pay was given to employees who met certain metrics.
- Human Resource staff is working to place all teachers into their correct salary based on years of experience. Teachers have not been receiving step increases for their years of experience.
- Human Resources is researching teacher pay to present an updated, competitive pay scale for teachers to the Board at the November meeting for approval.



Confidentiality Statement

- In an effort to inform employees about potential violations of student data privacy laws enacted in 2014, they were asked to read and sign a Confidentiality Statement on June 2, 2022.
- By signing this document, our employees acknowledge they are aware of and will abide by Louisiana Revised Statute 17:3914, which provides for the protection of student information privacy of personally identifiable information, and Family Educational Rights and Privacy Act of 1974 (FERPA).
- Anyone who violates student data privacy laws in accordance with LA R.S. 17:3914(G) shall be punished by imprisonment for not more than six (6) months or by a fine not more than \$10,000.

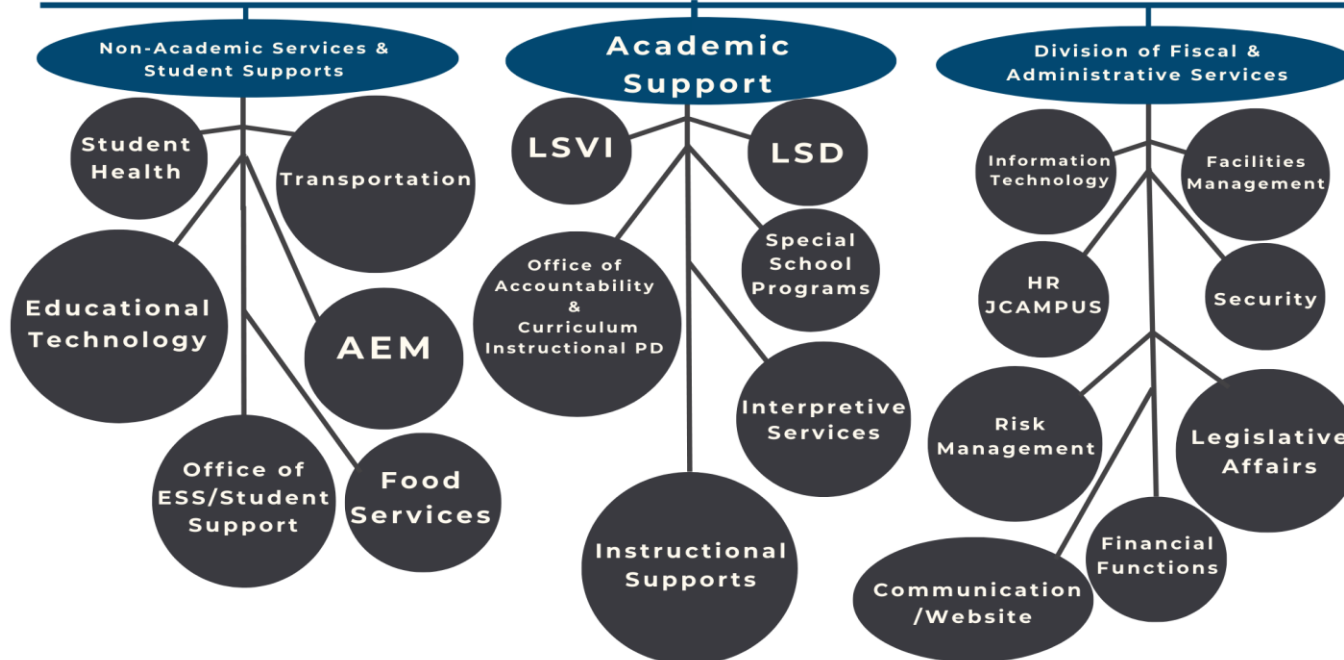


Organizational Chart

Special School District
2888 Brightside Drive
Baton Rouge, LA 70820
(225) 769-8160

Superintendent

Legal



#EducationWithoutLimits

www.SSDofLA.org

www.SSDofLA.com

LSDVI Historical Enrollment



October Count/Year	LSDVI Total Count	LSD Total Count	% Change	LSVI Total Count	% Change
October 2012	217	153	--	64	--
October 2013	207	138	-9.8%	69	+7.8%
October 2014	193	128	-7.2%	65	-5.8%
October 2015	200	137	+7.0%	63	-3.1%
October 2016	194	128	-6.6%	66	+4.8%
October 2017	197	128	0%	69	+4.5%
October 2018	203	134	+4.7%	69	0%
October 2019	188	115	-14.2%	73	+5.8%
October 2020	168	98	-14.8%	70	-4.1%
October 2021	155	93	-5.1%	62	-11.4%

Special School Programs Staffing and Enrollment – Aug. 2

- Enrolled Students - 226
- Total Teaching Staff - 25
- Total Sites - 15

**Counts are as of August 2, 2022*



Louisiana School for the Deaf Staffing and Enrollment – Aug. 2

- Enrolled Students: 84
- Anticipated new students: 5
- Pending Admission: 2
- Total Teaching Staff: 21



** Counts are as of August 2, 2022 and families are still submitting applications for admission. Expected enrollment is approximately 90 students.*

Louisiana School for the Visually Impaired Staffing and Enrollment – Aug. 2

- Enrolled Students: 49
- Anticipated new students: 6
- Pending Admissions: 1
- Total Teaching Staffing: 22



** Counts are as of August 2, 2022 and families are still submitting applications for admission. Expected enrollment is approximately 60 students.*

Student Transcripts

Issue:

Grades not entered into JCampus in time for review process and transcripts to be distributed.

Solution: The Academic Support Team will develop a process, including a timeline with firm deadlines/dates and reminders, for the reporting of grades at the end of each 9 weeks. All graduating seniors will have transcripts on graduation day.

**Grades should be input into Jcampus two weeks prior to graduation so they can clear STS.*



2022 Legislative Session Update

SSD Bills:

- **Act 302** (SB 176) by Sen. Fields – Amends the Blind Persons’ Literacy Rights and Education Act updating this law from 1992. This bill was the collaborative work of Lighthouse Louisiana, National Federation of the Blind, Affiliated Blind of Louisiana, Louisiana Association of the Blind, Louisiana Center for the Blind, Accessible Educational Materials Center, Louisiana Special School District, and LDOE.
- **Act 617** (HB 315) by Rep. Turner – Creates the Blind and Visually Impaired Child’s Bill of Rights.
- **Act 136** (HB 211) by Rep. McKnight – Changes nominating entities to the SSD Board of Directors and clarifies the terms of board members relative to their appointing authority.



Teachers' Advisory Council

SCR 40 by Sen. Milligan is an urgent request for city, parish, and local school boards to create the Teachers' Advisory Council to allow teacher input into the decisions that impact student learning and report to their local school board on their discussions.

Members:

- Special School Programs: Latisha Small and Kathi Mitchell
- LSVI: Renee Griffin and Eric Guillory
- LSD: Donalda Abadie and Robby Porter



Teachers' Advisory Council

Our student population is all special education. Therefore, many laws and policies are not considering the specific needs of the students we serve.

For example:

- Students lack foundational skills and guidebook pace for standards are fast
- Language deprivation for Deaf/HoH students at LSD
- Students with visual impairments often need other accommodations, such as those taught through the Expanded Core Curriculum.
- State assessments are designed for hearing and sighted children.
- Students with disabilities need more career options that meet their needs so they can leave high school with a job.
- Laws sometimes overstep – Act 517 – three-cueing system/visual memory reading



Teachers' Advisory Council

Compensation:

- Appreciative of \$1,500 supplemental pay
- Incentive for certifications for SSP staff
- Compass is a great tool but could be modified, particularly for OJJ students. Difficult to receive performance increase.



Questions/Comments from Board Members

