

## Online Lessons

- **Gallaudet University**
  - \* <https://www.gallaudet.edu/asl-connect/asl-for-free>
- **Life Print**
  - \* <https://www.lifeprint.com/>
  - \* <https://www.youtube.com/user/billvicars>
- **Start ASL**
  - \* <https://www.startasl.com/learn-sign-language-asl>
- **True Biz ASL**
  - \* <http://signitasl.com>

## ASL Websites

- <http://asl.bz/>
- <http://asl.ms/>
- [www.aslized.org](http://www.aslized.org)
- [www.aslpro.com](http://www.aslpro.com)
- [www.aslnook.com](http://www.aslnook.com)
- [www.asluniversity.com](http://www.asluniversity.com)
- [www.babysignlanguage.com](http://www.babysignlanguage.com)
- [www.mydeafchild.org/learn-asl](http://www.mydeafchild.org/learn-asl)
- [www.enchangedlearning.com](http://www.enchangedlearning.com)
- [www.handspeak.com](http://www.handspeak.com)
- [www.hearmyhands.com](http://www.hearmyhands.com)
- [www.lalsd.org/content.cfm?id=1615](http://www.lalsd.org/content.cfm?id=1615)
- [www.lifewire.com/free-sign-language-classes-online-1357048](http://www.lifewire.com/free-sign-language-classes-online-1357048)
- [www.rit.edu/ntid/dictionary/](http://www.rit.edu/ntid/dictionary/)
- [www.signingonline.com](http://www.signingonline.com)
- [www.signingsavvy.com](http://www.signingsavvy.com)
- [www.signlanguage101.com](http://www.signlanguage101.com)
- [www.signschool.com](http://www.signschool.com)
- [www.spreadthesign.com/](http://www.spreadthesign.com/)

## Resources for Families

- (American Society for Deaf Children): <http://deafchildren.org/knowledge-center/parents-and-families/asl-signon/>
- [www.youtube.com/user/aslizedvideos](http://www.youtube.com/user/aslizedvideos)
- <http://deafchildren.org/knowledge-center/parents-and-families/asl-signon/>
- <https://www.youtube.com/user/ashleyclarkfry>
- (My Deaf Child): [www.mydeafchild.org](http://www.mydeafchild.org)
- (National Association of the Deaf): [www.nad.org/resources/early-intervention-for-infants-and-toddlers/information-for-parents/sign-language-for-parents/](http://www.nad.org/resources/early-intervention-for-infants-and-toddlers/information-for-parents/sign-language-for-parents/)
- (Nyle DiMarco Foundation): [www.youtube.com/channel/UCSgIbwTeqE4E11fkLHVLTig](http://www.youtube.com/channel/UCSgIbwTeqE4E11fkLHVLTig)
- [www.rit.edu/ntid/radscc/content/asl-courses](http://www.rit.edu/ntid/radscc/content/asl-courses)
- [www.youtube.com/watch?v=b1VUpNv8oIQ](http://www.youtube.com/watch?v=b1VUpNv8oIQ)
- [www.signingtime.com](http://www.signingtime.com)
- [https://rmds.jeffcopublicschools.org/academics/toddler\\_program/a\\_s\\_l\\_videos?fbclid=IwAR1vgeS4fhcRGBqV2rQzzk-9oSbvcW45-bqidXe6SWH3Oepd4uVc4l4TLC4](https://rmds.jeffcopublicschools.org/academics/toddler_program/a_s_l_videos?fbclid=IwAR1vgeS4fhcRGBqV2rQzzk-9oSbvcW45-bqidXe6SWH3Oepd4uVc4l4TLC4)

## YouTube ASL Resources

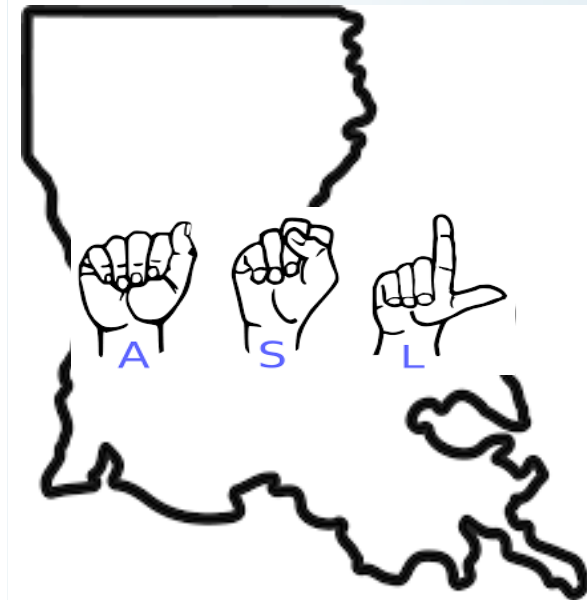
- ASL Nook
- ASL That!
- English by Eye: (For Deaf Children to Learn English) <https://www.youtube.com/channel/UCjEcrVFcbHhro-codvYGV9w>
- [www.youtube.com/user/expertvillage/search?query=ASL&app=desktop](http://www.youtube.com/user/expertvillage/search?query=ASL&app=desktop)
- [www3.gallaudet.edu/clerc-center/learning-opportunities/online-learning/focusing-on-early-accessible-language.html](http://www3.gallaudet.edu/clerc-center/learning-opportunities/online-learning/focusing-on-early-accessible-language.html)
- Seek the World

## Apps

- ASL Coach
- ASL Kids
- ASL Fingerspelling
- ASL with Carebears
- ASL Nook
- Deaf Education Social Justice (Story Books in ASL)
- Baby Sign Language Dictionary
- Hands Land
- Marlee Signs
- Sign Language for Beginners
- Sign School
- Signbuilder
- SpeaktheSign
- The ASL App
- We Sign

## Facebook

- Ai-Media
- ASDC (American Society for Deaf Children)
- ASL 4 Deaf Kids
- ASL Concepts
- ASL Dictionary
- ASL Exchange
- ASL Films
- ASL Grade
- ASL Slam
- Daily Moth
- Deaf Rock
- Deaf TV
- Deaf TV Country
- DPAN.TV
- Gallaudet University
- LA Deaf Connection
- Louisiana School for the Deaf
- Master ASL
- Max ASL
- Sign1News
- Signing Time
- The ASL Classroom
- The Daily Moth
- The Sign Language Page
- True-Biz ASL



# American Sign Language (ASL) Classes in Louisiana & Resources

This brochure serves as a resource for ASL classes offered in Louisiana, either community or in educational settings. There is also information in regards to ASL resources accessible via online, apps, and social media.

Louisiana School for the Deaf  
2888 Brightside Lane,  
Baton Rouge, LA 70820  
Phone: (225) 757-3200  
Website: [www.lalsd.org](http://www.lalsd.org)

## ASL Community Classes in Louisiana

### Baton Rouge

- \* Louisiana School for the Deaf
  - \* Curriculum: Signing Naturally
  - \* Courses: Level 1, 2, 3, 4, & 5
  - \* Sessions: An hour and a half a session per week for 10 weeks.
  - \* Email: atarasyuk@lsdvi.org
  - \* (225) 341-6528
  - \* <http://www.lalsd.org/content.cfm?id=1584>
  - \* Cost: \$50, FREE for immediate family.
  - \* Materials: Book \$85.95
  - \* Location: 2888 Brightside Lane, Baton Rouge, LA 70820
- \* Deaf Focus
  - \* Curriculum: Signing Naturally
  - \* Courses: ASL Level 1, 3, & ASL Kids
  - \* Sessions: 2 hours a session per week for 8 weeks.
  - \* (225) 319-5586
  - \* Cost: \$100
  - \* Location: 4332 Rhoda Dr, Baton Rouge, LA 70816
  - \* <https://www.deaffocus.org/sign-language-class>

### Bossier City

- \* Course: Fundamentals of ASL
- \* Sessions: An hour, once a week.
- \* (318) 286-6213
- \* Cost: \$100, 20% discount for Military, Law enforcement, EMT, or Firefighters
- \* Location: River Valley Church, 3800 Viking Drive, Bossier City, LA

### Denham Springs

- \* Course: ASL I
- \* Cost: \$75
- \* Sessions: Two hours a session per week for 10 weeks
- \* Location: The Crossing Apartments, 10888 Buddy Ellis Rd, Denham Springs, LA
- \* Contact: Flying Hands Facebook Page

### Hammond

- \* Course: ASL I
- \* Curriculum: Signing Naturally
- \* Sessions: An hour per session for 5 weeks.
- \* Cost: FREE
- \* When: Mondays at 6:30 PM
- \* Location: Mission Church
- \* Contact: Hammond Signs Facebook Page

### Lafayette

- \* Deaf Action Center
  - \* Course: Beginners ASL
  - \* Cost: \$75
  - \* Sessions: Two hours a session per week for 10 weeks
  - \* (337) 232-3463
- \* S.J. Montgomery Elementary
  - \* Courses: Beginners I & Beginners II
  - \* Sessions: Once a week for 8 weeks.
  - \* Cost: FREE
  - \* Location: 600 Foreman Drive, Lafayette, LA (cafeteria)
- \* University of Lafayette Louisiana
  - \* Courses: Beginners & Intermediate, Children classes offered during summers.
  - \* Department: Potpourri/Community Courses.
  - \* Sessions: One hour for 8 weeks.
  - \* Cost: \$85.00
  - \* [www.louisiana.augusoft.net](http://www.louisiana.augusoft.net)

### Lake Charles

- \* McNeese State University
  - \* Department: Leisure Learning
  - \* Course: Beginning Sign Language
  - \* Sessions: An hour a session per week for 8 weeks.
  - \* Location: Burton Business Center
  - \* [leisurelearning@mneese.edu](mailto:leisurelearning@mneese.edu)
  - \* (337) 475-5616

### New Orleans

- \* New Orleans Sign Language Services
  - \* Course: ASL Study Group
  - \* Location: 5324 Canal Blvd, New Orleans
  - \* [info@neworleanssignlanguageservices.com](mailto:info@neworleanssignlanguageservices.com)
  - \* (504) 722-2269
- \* Tulane University
  - \* <https://classschedule.tulane.edu/Results.aspx>
- \* Xavier University
  - \* <http://www2.xula.edu/languages/aramburo.html>

### Shreveport

- \* Deaf Action Center (DAC)
  - \* Course: Introduction to ASL
  - \* Cost: \$100
  - \* Location: Highland Center (Chapel) 520 Olive St., Shreveport, LA 71104
  - \* (318) 344-5130
  - \* [www.neworleanssignlanguageservices.com/free-asl-classes](http://www.neworleanssignlanguageservices.com/free-asl-classes)

## ASL Classes Offered in Louisiana Schools

- Baton Rouge:
  - \* Louisiana School for the Deaf
    - \* ASL I & II
- Covington High School
  - \* ASL I & II
- Lafayette:
  - \* Lafayette High School
    - \* ASL I & II
  - \* St. Thomas Moore Catholic School
    - \* ASL I & II
- Lake Charles:
  - \* Barbe High School
    - \* ASL I & II
- Slidell:
  - \* Slidell High School
    - \* ASL I & II
- Walker:
  - \* Walker High School
    - \* Courses: ASL I, II, III, & IV

## Home School Programs ASL Classes Online

- University View Academy
  - \* ASL I & II
- Virtual Village
  - \* ASL I & II
  - \* <https://www.villagevirtual.com/high-school>

## Louisiana College's ASL Classes

- Delgado University
  - \* ASL Interpreting Program
  - \* <http://www.dcc.edu/academics/communication/american-sign-language.aspx>
- Tulane University
  - \* Courses: LING 1010 (ASL I), LING 1015 (ASL II), LING 2010 (Intermediate ASL)
  - \* [http://www.tulane.edu/~catalog/catalog-18-19/pages/la\\_courses.html](http://www.tulane.edu/~catalog/catalog-18-19/pages/la_courses.html)
- University of Lafayette Louisiana (ULL)
  - \* Courses: ASL 101, ASL 102, ASL 201
  - \* <https://catalog.louisiana.edu>
  - \* ULL has an ASL Club
- Xavier University
  - \* <http://www2.xula.edu/languages/aramburo.html>

## Online College ASL Courses

- Rochester Institute of Technology
  - \* <https://www.ntid.rit.edu/aslie/asl-online>
- Gallaudet University
  - \* <https://www.gallaudet.edu/asl-connect/asl-courses>